

TORNUS

... opens the door to a new realm of PCI

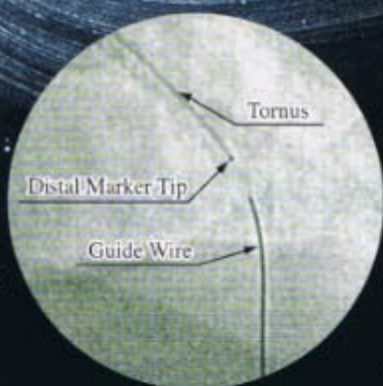


ASAHI INTECC

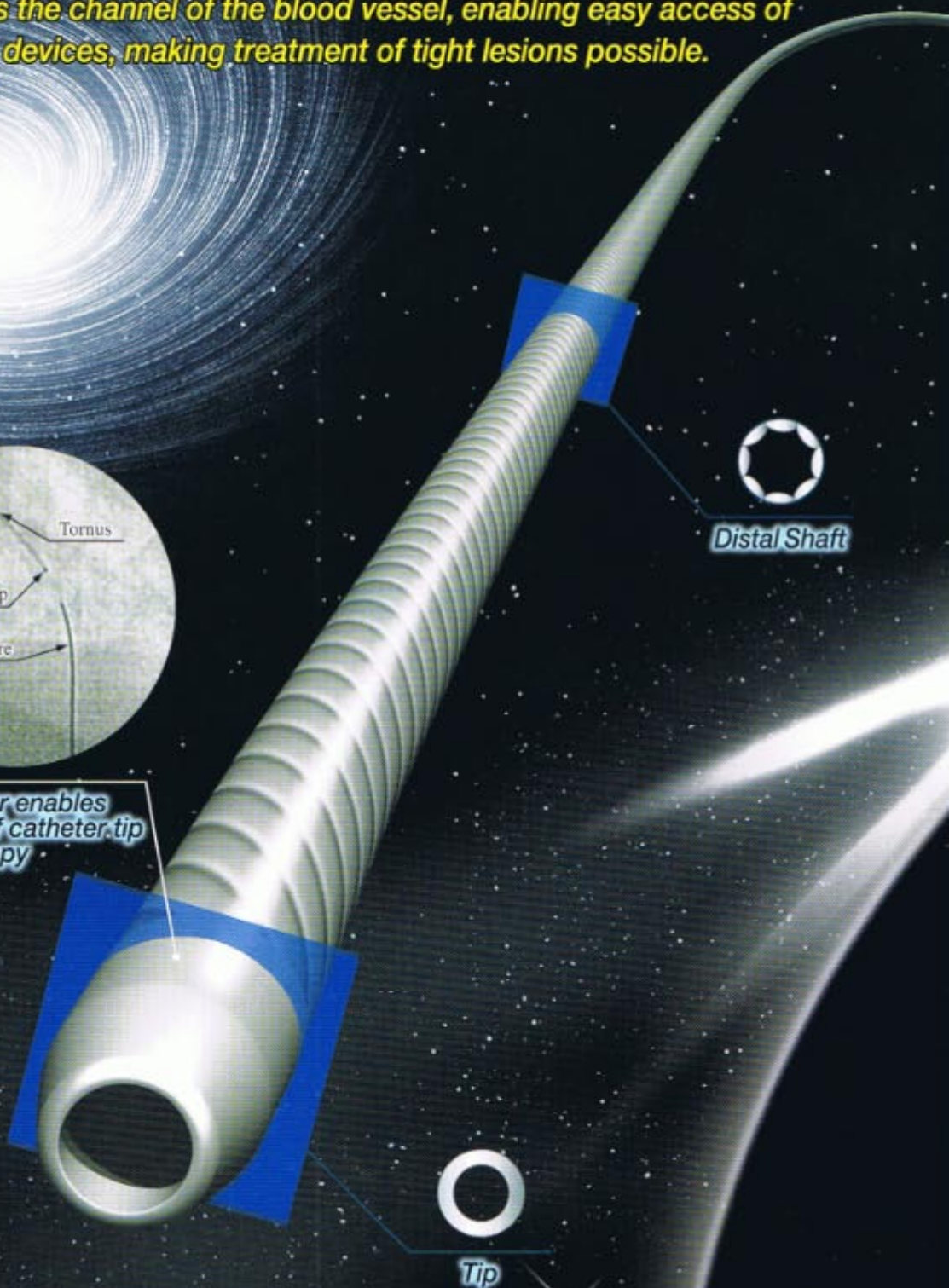
Tornus

Mak

*Tornus opens the door ... with its advanced driving force.
It enlarges the channel of the blood vessel, enabling easy access of
other PCI devices, making treatment of tight lesions possible.*

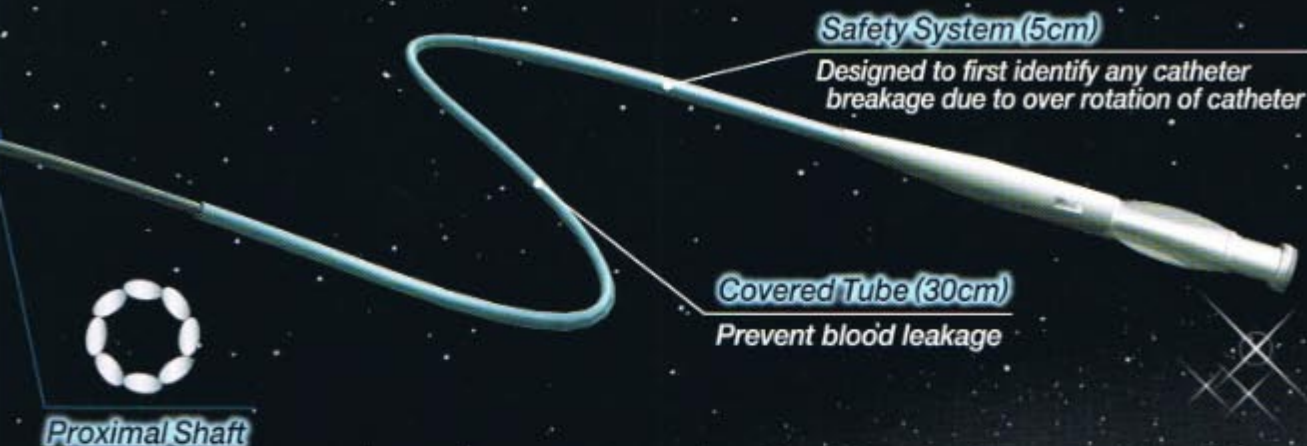


*Platinum marker enables
clear visibility of catheter tip
under fluoroscopy*



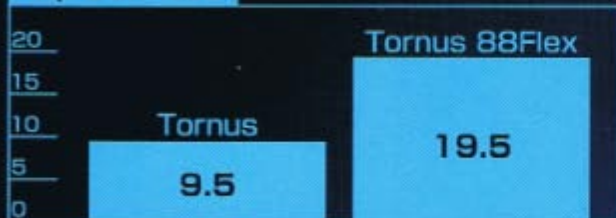
Make a landing!

~ New realm of PCI ~



	Tip	Distal Shaft	Proximal Shaft
Tornus φ0.12mm×8wires			
Tornus 88Flex φ0.18mm×8wires			

Tip Stiffness



Wire Structure

Tornus	φ0.12mm×8wires
Tornus 88Flex	φ0.18mm×8wires

Screw Pitch

Tornus	1.1mm
Tornus 88Flex	1.7mm

Screw pitch : The theoretical advancement of the wire in 1 turning

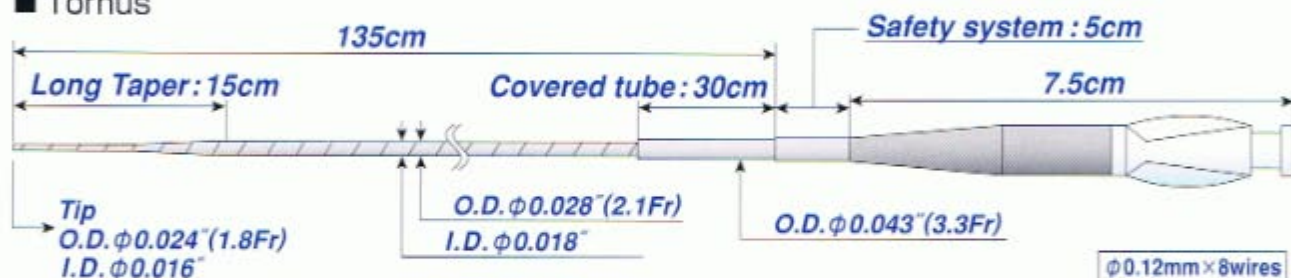
Penetration Ability



The distance of penetration into a salami after 3 sets of 20 revolutions in 1 minute

Tornus

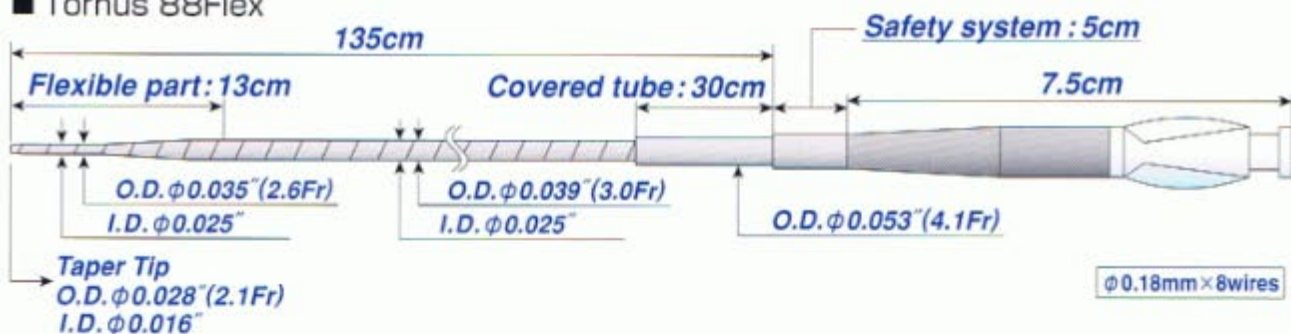
■ Tornus



Catalog Number	Catheter Usable Length (cm)	O.D. of Shaft (mm/inch)	I.D. of Shaft (mm/inch)	O.D. of Tip (mm/inch)	I.D. of Tip (mm/inch)	Dia. of Covered Tube (mm/inch)	Recommended Guidewire (mm/inch)
AT24135	135	0.71 0.028	0.46 0.018	0.61 0.024	0.41 0.016	1.10 0.043	0.36 0.014

*When removing Tornus catheter, an Extension wire or 300cm guidewire is required.

■ Tornus 88Flex



Catalog Number	Catheter Usable Length (cm)	O.D. of Distal Shaft (mm/inch)	O.D. of Proximal Shaft (mm/inch)	I.D. of Distal and Proximal Shaft (mm/inch)	O.D. of Tip (mm/inch)	I.D. of Tip (mm/inch)	Dia. of Covered Tube (mm/inch)	Recommended Guidewire (mm/inch)
AT35135	135	0.88 0.035	1.00 0.039	0.64 0.025	0.70 0.028	0.41 0.016	1.35 0.053	0.36 0.014

*When removing Tornus 88Flex catheter, an Extension wire or 300cm guidewire is required.

Manufactured by:



ASAHI INTECC CO., LTD.
 1703 Wakita-Cho, Moriyama-Ku, Nagoya 463-0024 Japan
 Tel: +81-52-768-1220 Fax: +81-52-768-1219 <http://www.asahi-intecc.co.jp>

ASAHI INTECC CO., LTD. EUROPE
 Strawinskylaan 449
 (WTC Tower C-4th floor)
 1077 XX Amsterdam,
 The Netherlands
 Tel: +31-(0)20-794-0640
 Fax: +31-(0)20-794-0641

ASAHI INTECC USA, INC.
 1301 Dove Street, Suite 350,
 Newport Beach,
 CA 92660, USA
 Tel: +1-949-756-8252
 Fax: +1-949-756-8165

ASAHI INTECC (THAILAND) CO., LTD.
 158/1 Moo 5,
 Bangkadi Industrial Park,
 Tiwanon Road, Amphur Muang,
 Pathumthani 12000,
 Thailand
 Tel: +66-2-501-1302
 Fax: +66-2-501-1305

ASAHI INTECC CO., LTD.
 SINGAPORE REPRESENTATIVE OFFICE
 3 Bishan Place
 #06-01 Bishan CPF Building
 Singapore 579838
 Tel: +65-6250-4248
 Fax: +65-6250-4247

